

moll



Product guide

moll prime

Desks, swivel chairs, mobile containers, desk lamps and many more accessories for children and young people

Height adjustments from moll

Classic

- » Adjustment method: Hook fitting
- » 10-level height adjustment:
from 53 - 82 cm
- » Body height: 1.20 - 1.90 m

Classic height adjustment

The Classic height adjustment is the functional and inexpensive entry into the world of moll. The manual height adjustment with the established hook fitting has a 10-level adjustment range, which can be set from 53 to 82 cm. In this way, the desk height can be adjusted to the user at any time in an ergonomically correct manner.

The Joker children's desk is only available with the Classic height adjustment. The Winner can alternatively be equipped with the Comfort height adjustment.



Further information about the height adjustment and tilting variants can be found scanning the related QR code:



Height adjustments



Tilting options





Comfort height adjustment

With the synchronized and stepless adjustment of the desk height, the patented Comfort height adjustment system makes a significant contribution to the perfect ergonomics of our moll desks. Using the yo-yo on the Comfort legs, the desks can be adjusted to the ergonomically correct height by simply pulling the yo-yo. It can be "connected" to the right or left side of the desk and can be removed at any time. Information about the height (in cm) printed on the base frame assists in adjusting the height of the desks.

The Winner can be optionally equipped with the stepless height adjustment. The Champion is supplied with the Comfort height adjustment as a standard.



- » Adjustment method: rope pull system
- » Stepless height adjustment
- » Adjustment without effort, by simply pulling
- » The yo-yo can be removed at any time and it is also a safety lock for children
- » Body height: 1.20 - 1.90 m



The following chart is a guide for adjusting the desk height. Please ensure that the chair is set correctly.

Body height	Desk height	Body height	Desk height
119 cm	~ 53 cm	159 cm	~ 69 cm
127 cm	~ 56 cm	167 cm	~ 72 cm
135 cm	~ 59 cm	175 cm	~ 75 cm
143 cm	~ 63 cm	183 cm	~ 79 cm
151 cm	~ 66 cm	191 cm	~ 82 cm

Depending on the body proportions (upper body compared to the length of the legs), the actual height of the person sitting at the desk can vary up to 10 cm from the numbers given above.

Height adjustments from moll



- » Adjustment method:
Spring force system
- » Stepless height adjustment to sitting
or standing height
- » Adjustment range: 69 - 114 cm
- » Adjustment range with height
adapter: 79 - 124 cm
- » Body height: 1.55 - 1.95 m



Express height adjustment

The mechanically operated Express height adjustment has a wide adjustment range from 69 to 114 cm. Always at the right height: By pressing the operating lever, the desk can be moved from sitting to standing height in unbeatable 0.8 seconds. The force of the spring can be adjusted according to the desks load. Optionally, the height adapter can be used to extend the adjustment range by another 10 cm – from 79 to 124 cm.

Within the product range of moll prime, the Express height adjustment is only available for the Champion Compact Express.



The following chart is a guide for adjusting the desk height.

Body height	Desk height while sitting	Desk height while standing
159 cm	~ 69 cm	~ 102 cm
167 cm	~ 72 cm	~ 108 cm
175 cm	~ 75 cm	~ 113 cm
183 cm	~ 79 cm	~ 118 cm
192 cm	~ 82 cm	~ 124 cm

Depending on the body proportions (upper body compared to the length of the legs), the actual height of the person sitting at the desk can vary up to 10 cm from the numbers given above.

Tilting options for the desktops

Our tilting systems

Depending on the model, moll children's desks offer varying comfort when adjusting the angle of the desktop to be tilted. To ensure that no items slip, Winner and Champion always come with a slip stop, which can also be used as a ruler or magnifying glass. With the Joker a simple slide stop is clipped to the edge of the desktop.



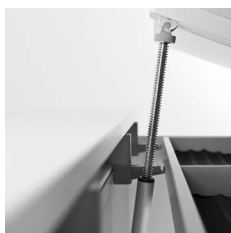
Joker tilting system (detent fitting)

The desktop of the joker can be easily tilted with the integrated spring support. Simply lift the desktop up: The built-in tilting system with 6 click-stop positions allows a maximum tilt angle of up to 16 degrees.



Winner tilting system (brake fitting)

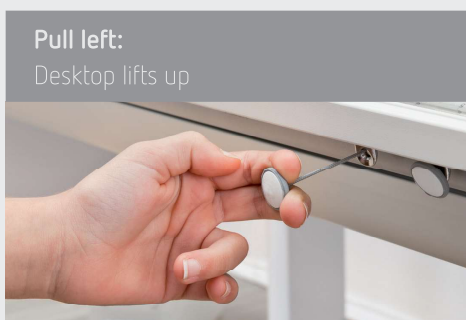
Lift the desktop of the Winner up to the desired position - it can be tilted steplessly up to 18 degrees. To return to the original position, simply pull the lever below the desktop and lower it. The patented and adjustable brake prevents the desktop from unwanted falling back.



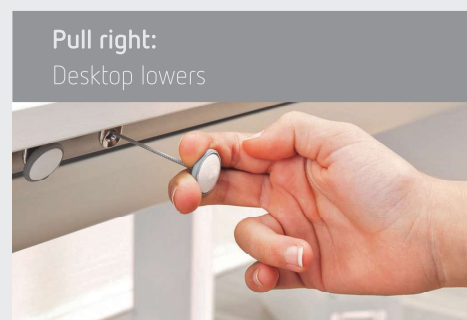
Champion tilting system (rope pull)

An intuitive and easy to use rope pull system is integrated to the Champion under the front edge of the desk. It does not only look good, but can also be operated while sitting or standing. The desktop can be tilted up to 20 degrees very easily and in complete safety.

Champion rope pull system:



or



Overview: prime desks

Summary of all common features and differences

Measurements:

- ↔ Space required in width
- ↔ Space required in depth
- ↕ Space required in height



Model	Joker
Desk version	Joker
Space requirements (w x d)	↔ 116 x ↔ 68
Desktop dimension (w x d)	113 x 67
Desk height (cm)	53 - 82
Height adjustment	Classic
Tilting system	Detent fitting, 6 steps
Design option	white
Standard equipment	Basic book holder, anti-slip stop, hook for bags
Additions	Drawer, Side Top, Pro



Winner

Winner Split, Winner,
Winner Compact (CP)

Winner Split: ⇄ 121 x ⇄ 72
Winner CP: ⇄ 89 x ⇄ 72

Winner: 116 x 70
Winner Split: 116 x 70
Winner CP: 89 x 70

53 - 82

Class:c or **omfort**

Brake fitting, stepless

white, maple-white, oak

Basic book holder,
Magnetic ruler, hook for bags

Drawer and drawer cover,
Side Top, Twin Box, Multi Deck, Flex
Deck, Tower 56, Pro



Champion

Champion Front Up, Champion Left Up,
Champion Right Up, Champion Compact
(CP), Champion Compact Express (CPE)

Champion: ⇄ 121 x ⇄ 72
Champion CP + CPE: ⇄ 91 x ⇄ 72

Champion: 120 x 72
Champion CP + CPE : 90 x 72

53 - 82, CPE: 69 - 114,
CPE with height adapter: 79 - 124

omfort or **express**

Rope pull, stepless

white, on request with
colored or solid wood side panels

Design book holder,
Magnetic ruler, hook for bags

Drawer and drawer cover, cable duct
cover, Qi-Charger, height adapter (CPE),
Side Top, Multi Deck, Panel (not applica-
ble for CP and CPE), Flex Deck, Tower 56,
Cubic, Cubicmax

Joker family





Joker





Features:

Desk model	Desktop	Width (cm)	Depth (cm)	Height (cm)	Design
Joker	single-piece	113	67	53-82	white

- A** Legs are equipped with the **Class:c** height adjustment (53-82 cm)
- B** Single-piece desktop and easy to use tilting system
- C** 6 interchangeable accent colors included

Additions:

- D** Drawer - including pencil tray
- E** Side Top
- F** Design matching mobile container Pro in white

Included as standard equipment:

- Basic book holder
- Anti-slip stop
- Hook for bags

Joker

- ↔ 116 cm
- ↕ 68 cm
- ↕ 53-82 cm
- ⊕ 36 kg
- 📦 0,147 m³
- 🛠️ 2



The Joker comes with the classic moll details - easily adjustable in height and with a tiltable desktop. It is reduced to the essentials, without missing any ergonomic details. This desk offers everything that a child's adaptable desk needs in the basic configuration.

06 Joker desktop dimension

available in white

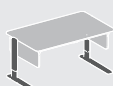


Joker



■ 113 x 67 cm

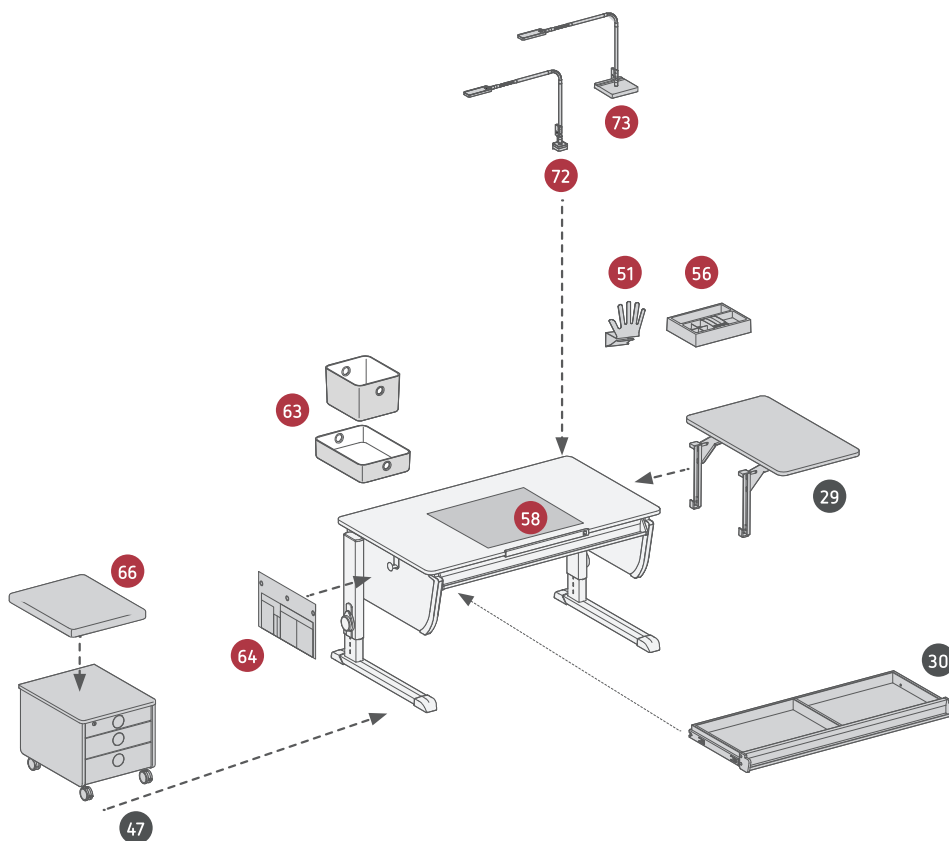
07 Legs



Classic legs - the height adjustment with its proven hook fitting, can be adjusted from 53 to 82 cm desk height and is suitable for a body height of 1.20 to 1.90 m.

Further information about additions:

- Joker additions (p. 17)
- Universal additions (p. 38-39)



30 Drawer

- ↔ 100 cm
- ↕ 36 cm
- ↔ 5 cm
- ⊞ 4 kg
- 📦 0,02 m³
- 🪑 1



- Silver colored drawer - load capacity up to 6 kg
- Plenty of storage space without limiting the space to move
- Two compartments
- Can be retrofitted
- Addition: Orga-Set

29 Side Top

- ↔ 40 cm
- ↕ 67 cm
- ⊞ 6,8 kg
- 📦 0,04 m³
- 🪑 1



- Desk extension in width - load capacity up to 12 kg
- Horizontal side shelf with rounded corners, remains even when the desk is tilted
- Mounted by using two brackets on the right or left side of the desk (can also be mounted on both sides)
- Material: white melamine-coated particle board
- Can be retrofitted at any time
- Addition: moll Baskets

47 Pro

- ↔ 43 cm
- ↕ 54 cm
- ↔ 43 cm
- ⊞ 21 kg
- 📦 0,13 m³
- 🪑 1



- Mobile container with rounded corners - load capacity up to 75 kg
- Four castors - two are equipped with brakes
- Organisational unit with plenty of storage space
- Design matches the Joker family
- Design: white
- Two drawers (DIN A3) - load capacity up to 2.5 kg
- One lockable drawer for equipment with a hidden secret box – load capacity up to 1 kg
- Automatic self-closing system
- Including 6 accent color inlays for the drawer handles
- Material: melamine-coated particle board
- Addition: (seat-) pad - turns the Pro into a stool

66 Pad

- ↔ 43 cm
- ↕ 54 cm
- ↔ 4 cm
- ⊞ 3 kg
- 📦 0,02 m³
- 🪑 1



- (Seat) Pad for mobile container Cubic and Pro
- Fabric cover is available in many different colors – these are matching the upholstery of the chairs
- Comfortable and high-quality 4 cm foam filling
- The cover is easy to clean – please note the attached care and washing instructions

Winner family





Winner



Design: Martin Moll





Features:

Desk model	Desktop	Width (cm)	Depth (cm)	Height (cm)	Design
Winner Split	split	116	70	53-82	white, oak, maple-white
Winner	single-piece	116	70	53-82	white, oak, maple-white
Winner Compact	single-piece	86	70	53-82	white, oak, maple-white

A Available with **Class:c** (53-82cm) or

omfort (53-82 cm) height adjustment

B Optionally with single or split desktop in three designs equipped with a tiltable desktop

C Rounded corners

D 6 interchangeable accent colors

E Legs with castors

Additions:

F Drawer and drawer cover

G Twin Box

H Side Top

I Multi Deck

J Flex Deck with magnetic board

K Design matching mobile container Pro

Included as standard equipment:

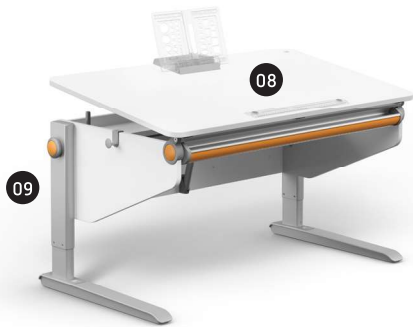
Basic book holder

Magnetic ruler

Hook for bags

Winner Split / Winner

- ↔ 121 cm
- ↕ 71 cm
- ↕ 53-82 cm
- ⊞ 39 kg
- ⊞ 0,145 m³
- ⊞ 2

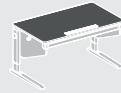


The Winner ensures a very simple and intuitive tilting of the desktop. The Winner Split can be mounted for right- or left-handed users. The Winner desk models can be equipped with either the Classic or Comfort height adjustment.

08

Winner design and desktop versions

available in white, maple-white or oak



Winner Split



■ 76 x 70 cm

■ 37,5 x 70 cm

Winner

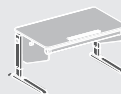


■ 116 x 70 cm

09

or 10

Legs

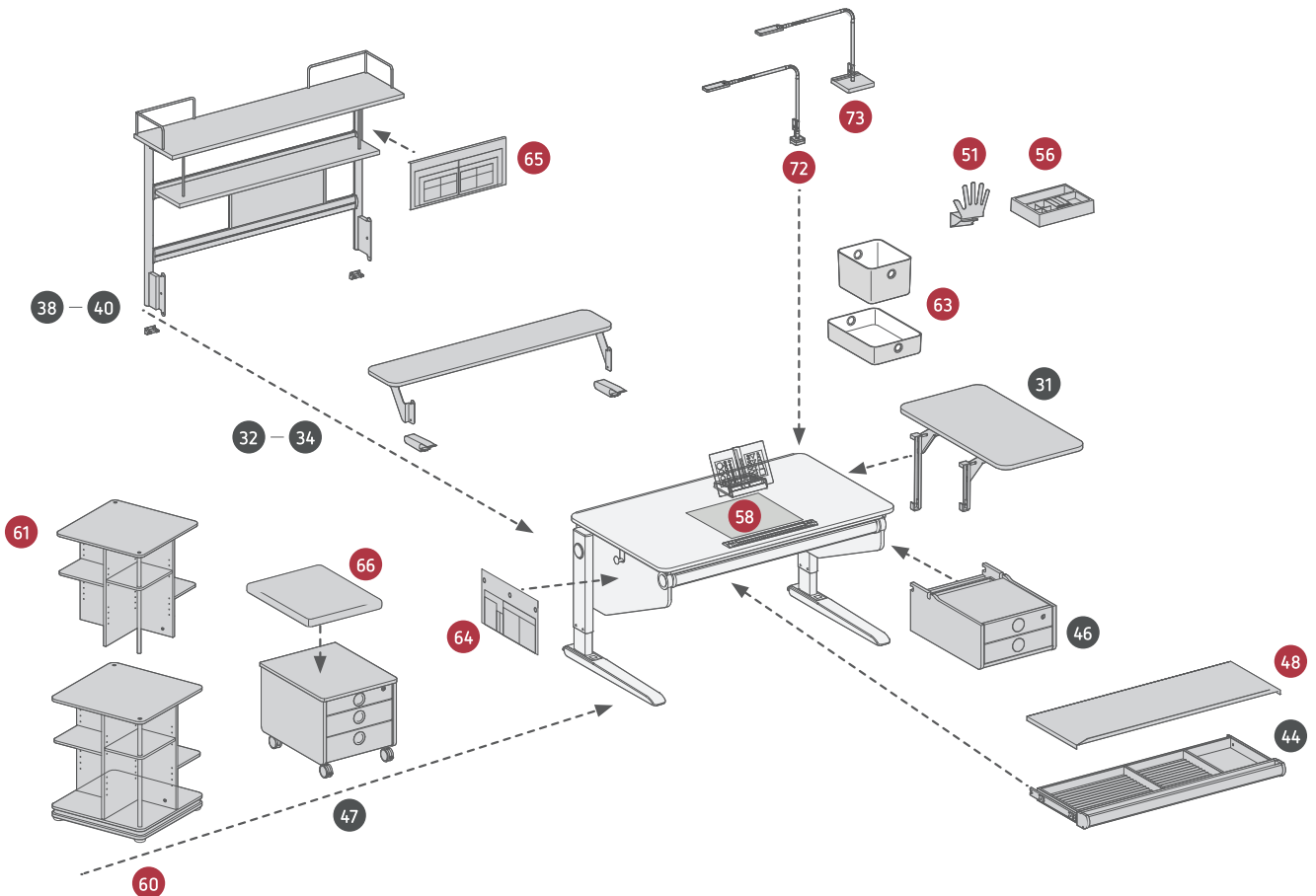


Classic legs - the height adjustment with its proven hook fitting, can be adjusted from 53 to 82 cm desk height and is suitable for a body height of 1.20 to 1.90 m.

comfort legs - stepless height adjustment with yo-yo, can be adjusted from 53 to 82 cm desk height and is suitable for a body height of 1.20 to 1.90 m.

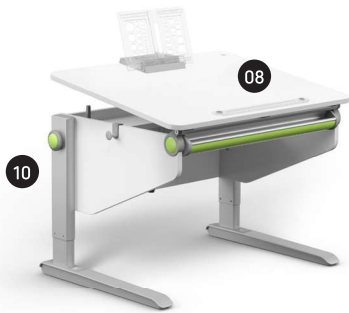
Further information about additions:

- Winner additions (p. 24-25)
- Universal additions (p. 38-39)




Winner Compact (CP)

- ↔ 89 cm
- ↕ 71 cm
- ↔ 53-82 cm
- ⊕ 33 kg
- ⊞ 0,122 m³
- ⊞ 2



The Compact version only differs from the Winner in its width. Its smaller dimensions make it perfect for children's rooms with little space. The Winner Compact is also an ideal quick-change artist when more space is needed. Additions such as the Side Top, Flex Deck CP or Multi Deck CP provide additional storage space.

08 Winner CP design and desktop versions
available in white, maple-white or oak



Winner Compact 86 x 70 cm

09 or 10 Legs

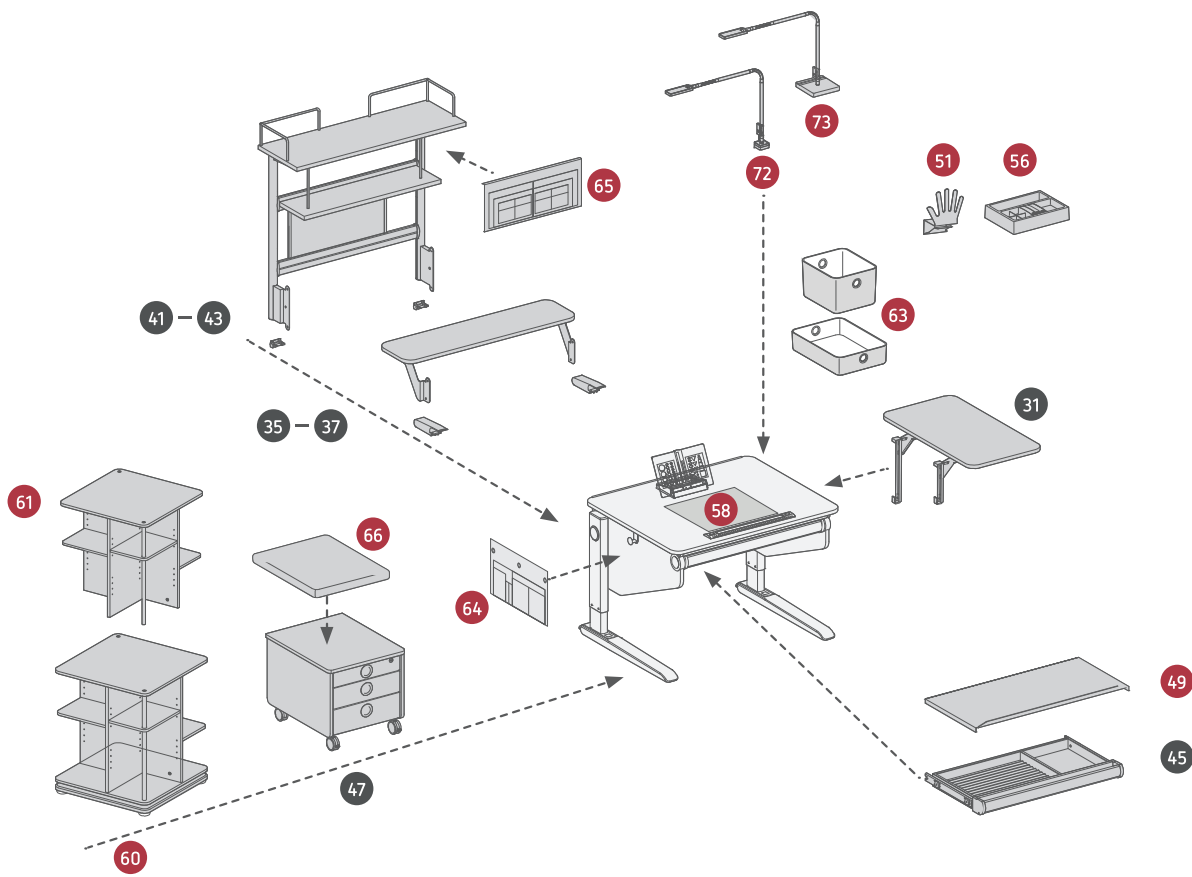
Class:c legs - the height adjustment with its proven hook fitting, can be adjusted from 53 to 82 cm desk height and is suitable for a body height of 1.20 to 1.90 m.



comfort legs - stepless height adjustment with yo-yo, can be adjusted from 53 to 82 cm desk height and is suitable for a body height of 1.20 to 1.90 m.

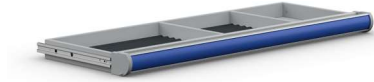
Further information about additions:

- Winner additions (p. 24-25)
- Universal additions (p. 38-39)



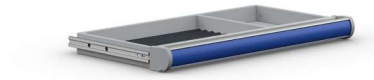
44 Drawer

↔ 102 cm
↕ 39,5 cm
⊕ 6,5 cm
⊖ 3,6 kg
📦 0,02 m³
🔢 1



45 Drawer CP

↔ 72 cm
↕ 39,5 cm
⊕ 6,5 cm
⊖ 2,9 kg
📦 0,02 m³
🔢 1



- Silver colored drawer - load capacity up to 6 kg
- Plenty of storage space without limiting the space to move
- Divided in two or three compartments
- Foam inlays prevent the contents from slipping
- Can be retrofitted
- Additions: Orga-Set and drawer cover

48 Drawer cover

↔ 104 cm
↕ 42 cm
⊕ 4 cm
⊖ 2,2 kg
📦 0,02 m³
🔢 1



49 Drawer cover CP

↔ 72 cm
↕ 42 cm
⊕ 4 cm
⊖ 1,9 kg
📦 0,02 m³
🔢 1



- Silver colored cover
- Drawer cover prevents the contents from getting dusty and provides visual protection, especially when the desktop is tilted.
- Material: High quality and lightweight aluminium compound

31 Side Top

↔ 38 cm
↕ 70 cm
⊕ 6,5 kg
📦 0,04 m³
🔢 1



- Desk extension in width - load capacity up to 12 kg
- Horizontal side shelf with rounded corners, remains even when the desk is tilted
- Additional storage space, even with tilted desktop
- Mounted by using two brackets on the right or left side of the desk (can also be mounted on both sides)
- Design: white, maple-white, oak
- Material: melamine-coated particle board
- Can be retrofitted
- Addition: moll Baskets

46 Twin Box

↔ 42 cm
↕ 57 cm
⊕ 24 cm
⊖ 8 kg
📦 0,09 m³
🔢 1



- Space-saving desk extension
- Can be mounted on the right or left side below the desktop
- Two drawers with self-closing mechanism - the upper one can be locked
- 6 color inlays for the drawer handles included
- Design: white, oak, maple-white
- Material: melamine-coated particle board
- Can be retrofitted
- Addition: Orga-Set

Attention: Cannot be used with Winner CP

32 33 34 Multi Deck

↔ 116 cm
 ↗ 22 cm
 ↕ 10 cm
 ⚖ 6,8 kg
 📦 0,03 m³
 🪑 1



35 36 37 Multi Deck CP

↔ 86 cm
 ↗ 22 cm
 ↕ 10 cm
 ⚖ 6 kg
 📦 0,03 m³
 🪑 1



- Desktop extension in depth - load capacity up to 12 kg
- Remains even when the desk is tilted
- Fixed by using two brackets on the back of the desk
- Extensions made of aluminium on the desk legs – for extra stability
- Design: white, maple-white, oak
- Material: melamine-coated particle board
- Can be retrofitted
- Addition: moll Baskets

38 39 40 Flex Deck

↔ 120 cm
 ↗ 30 cm
 ↕ 68 cm
 ⚖ 16 kg
 📦 0,06 m³
 🪑 1



41 42 43 Flex Deck CP

↔ 90 cm
 ↗ 30 cm
 ↕ 68 cm
 ⚖ 13 kg
 📦 0,06 m³
 🪑 1



- Multifunctional wall with two shelves and one magnetic board/whiteboard incl. 4 magnets - load capacity up to 12 kg
- Additional shelf space above the desktop
- Fixed by using two brackets on the back of the desk
- Two aluminium corner brackets (lateral support)
- Aluminium colored metal parts
- Design: white, maple-white, oak
- Material: melamine-coated particle board
- Can be retrofitted
- Additions: Utensilo behind and moll Baskets

47 Pro

↔ 43 cm
 ↗ 54 cm
 ↕ 43 cm
 ⚖ 21 kg
 📦 0,13 m³
 🪑 1



- Mobile container with rounded corners – load capacity up to 75 kg
- Four castors - two are equipped with brakes
- Organisational unit with plenty of storage space
- Matching Winner designs: white, maple-white and oak
- Two drawers (DIN A3) - load capacity up to 2.5 kg
- One lockable equipment drawer with a hidden secret box – maximum load up to 1 kg – automatic self-closing system
- 6 accent color inlays for the drawer handles included
- Material: melamine-coated particle board
- Addition: (seat-) pad - transforming the Pro into a stool

66 Pad

↔ 43 cm
 ↗ 54 cm
 ↕ 4 cm
 ⚖ 3 kg
 📦 0,02 m³
 🪑 1



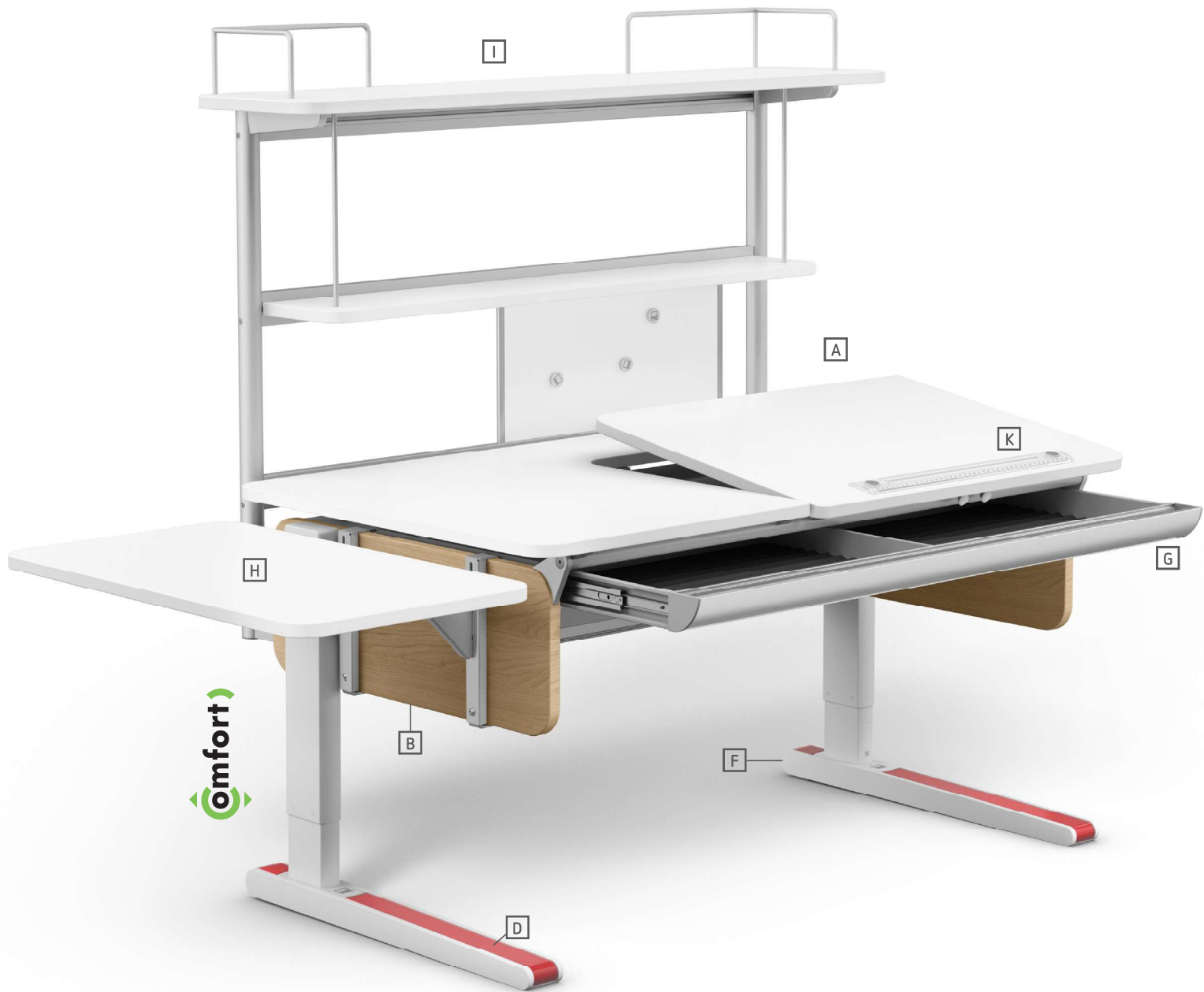
- (Seat) Pad for mobile container Cubic and Pro
- Fabric cover is available in many different colors – these are matching the upholstery of the chairs
- Comfortable and high-quality 4 cm foam filling
- The cover is easy to clean – please note the attached care and washing instructions

Champion family



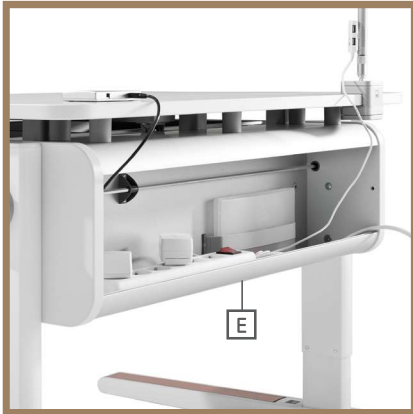


Champion



Design: PEARL CREATIVE and Martin Moll





Features:

Desk model	Desktop	Width (cm)	Depth (cm)	Height (cm)	Design
Champion Front up	split	120	72	53-82	white
Champion Left up (for right handers)	split	120	72	53-82	white
Champion Right up (for left handers)	split	120	72	53-82	white
Champion Compact	split	90	72	53-82	white
Champion Compact Express	split	90	72	69-124	white

- A** Tiltable desktop with rope pull system
- B** Exchangeable side panels in 8 versions
- C** **omfort** height adjustment with detachable yo-yo;
express height adjustment only available for Compact Express version

- D** 8 interchangeable accent colors included
- E** Aluminium cable duct with optional cover
- F** Legs with castors

Additions:

- G** Drawer and drawer cover
Wireless Qi-Charger
CPE height adapter (+10 cm)
- H** Side Top
Panel
Multi Deck
- I** Flex Deck
- J** Design matching mobile container Cubic and Cubicmax

Included as standard equipment:

- Design book holder
- K** Magnetic ruler
Hook for bags

Champion

- ↔ 121 cm
- ↕ 72 cm
- ↕ 53-82 cm
- ⊕ 37 kg
- ⊞ 0,137 m³
- ⊞ 3



The Champion combines design, ergonomics and safety like no other study desk for children. Three versions of the desktop as well as a patented height adjustment and tilting system enables an unsurpassed and very easy operation. In addition, it is equipped with a cable duct.

01 Champion desktop versions

	Champion Front up		120 x 53 cm		120 x 19 cm
	Champion Left up		68 x 53 cm		120 x 72 cm
	Champion Right up		68 x 53 cm		120 x 72 cm

03 Select Champion side panels

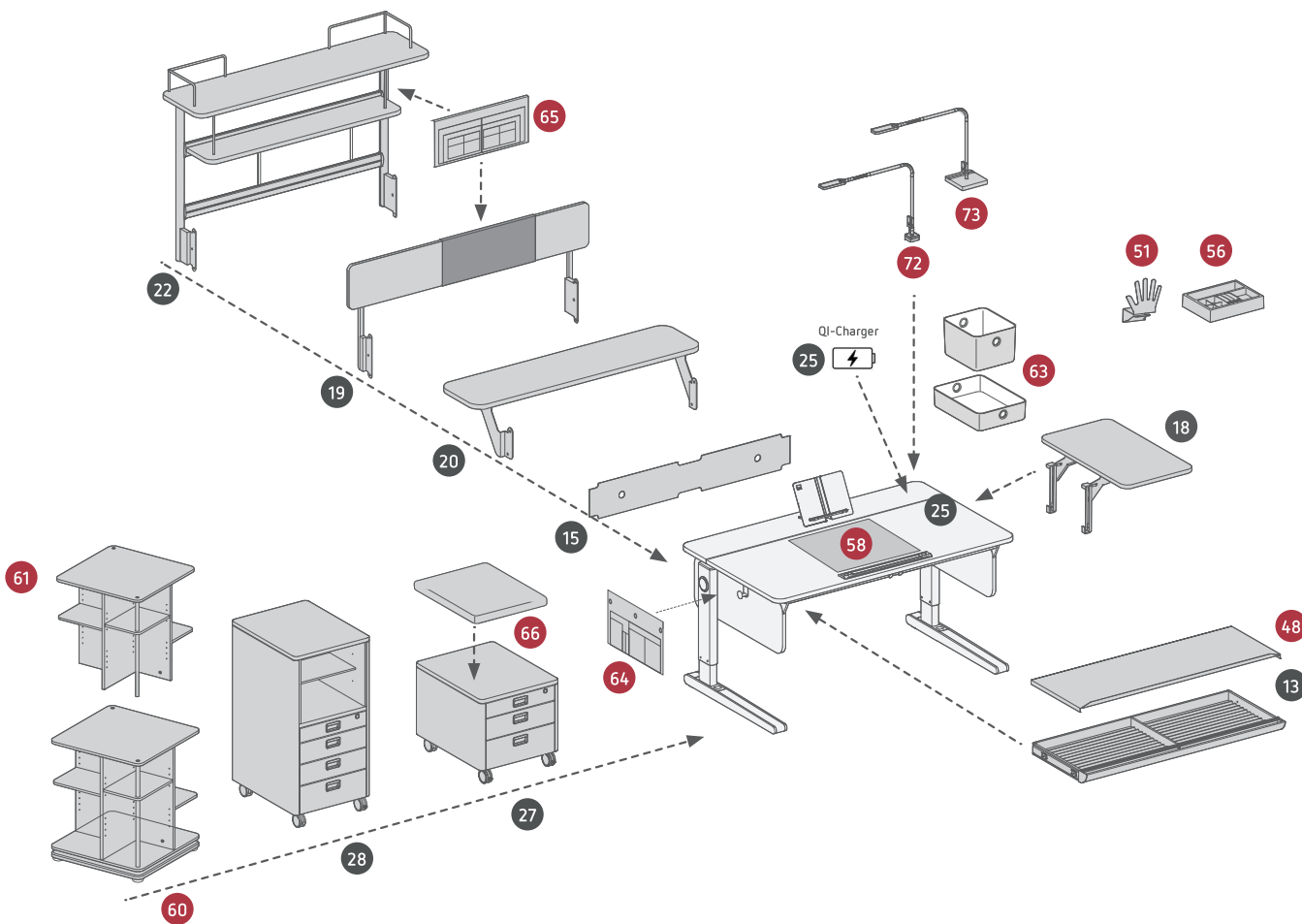
1. Wood-based panel in plain white design
2. Painted MDF boards available in five colors
3. Solid wood panels oiled made from oak or walnut

04 Legs

legs - stepless height adjustment with yo-yo, can be adjusted from 53 to 82 cm desk height and is suitable for a body height of 1.20 to 1.90 m.

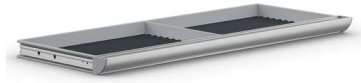
Further information about additions:

- Champion additions (p. 33-35)
- Universal additions (p. 38-39)



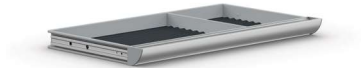
13 Drawer

↔ 103 cm ↗ 42 cm
 ⚙ 5,5 cm
 ⚖ 4,3 kg
 📦 0,03 m³
 🛠 1



14 Drawer CP + CPE

↔ 72 cm ↗ 42 cm
 ⚙ 5,5 cm
 ⚖ 4 kg
 📦 0,03 m³
 🛠 1



- Silver colored drawer - load capacity up to 6 kg
- Drawer size: 2 large DIN A3 compartments; Compact drawer: one DIN A3 and one DIN A4 compartment
- Plenty of storage space without limiting the free moving space
- Foam inlays prevent the contents from slipping
- Can be retrofitted
- Addition: Orga-Set and drawer cover

60 61 62 Tower 56

↔ 56 cm
 ↗ 56 cm
 ⚙ 66 cm (126 cm Add-on)
 ⚖ 28 kg (16 kg Add-on)
 📦 0,069 m³ (0,042 m³ Add-on)
 🛠 1 Basis (2 including Add-on)



+



- Square rotating shelf with low noise turning system – load capacity up to 50 kg, shelf up to 2 kg
- Modular system: Basic module with 4 shelves and 1 cover plate
- Two optional upgrade possibilities – can be retrofitted:
 1. Add-on: Additional level with 4 shelves
 2. Shelf set: Additional shelves in a set of 2
- Integrated handle bars secure shelf contents
- Soft pinch protection against squeezing
- Material: white melamine-coated particle board
- Addition: Shelf set, Add-on and moll Baskets

48 Drawer cover

↔ 104 cm
 ↗ 42 cm
 ⚙ 4 cm
 ⚖ 2,2 kg
 📦 0,02 m³
 🛠 1



49 Drawer cover CP + CPE

↔ 72 cm
 ↗ 42 cm
 ⚙ 4 cm
 ⚖ 1,9 kg
 📦 0,02 m³
 🛠 1



- Silver colored cover
- Drawer cover prevents the contents from getting dusty and provides visual protection, especially when the desktop is tilted.
- Material: High quality and lightweight aluminium

15 Cable duct cover

↔ 102 cm
 ⚙ 16 cm
 ⚖ 0,7 kg
 📦 0,002 m³
 🛠 1



16 17 Cable duct cover CP + CPE

↔ 72 cm
 ⚙ 16 cm
 ⚖ 0,6 kg
 📦 0,002 m³
 🛠 1



- Translucent cover for the cable duct
- Protects the cable duct from dust

Attention: For the Champion CP and Champion CPE two different versions are available

18 Side Top

↔ 40 cm
↕ 72 cm
⊞ 7,5 kg
📦 0,04 m³
🪪 1



- Desk extension in width - load capacity up to 12 kg
- Horizontal side shelf with rounded corners, also with tilted desktop
- Additional storage space, even with tilted desktop
- Mounted by using two brackets on the right or left side of the desk (can also be mounted on both sides)
- Material: melamine-coated particle board
- Can be retrofitted
- Addition: moll Baskets

19 Panel

↔ 120 cm
↕ 6 cm
↕ 20 cm
⊞ 7,2 kg
📦 0,026 m³
🪪 1



- Desk rear panel with a magnetic pin board incl. 4 magnets
- Fixed by using two brackets on the back of the desk
- Can be retrofitted
- Addition: Utensilo behind

Attention: Not compatible with Champion CP + CPE

20 Multi Deck

↔ 120 cm
↕ 30 cm
⊞ 6,8 kg
📦 0,026 m³
🪪 1



21 Multi Deck CP + CPE

↔ 90 cm
↕ 30 cm
⊞ 6 kg
📦 0,026 m³
🪪 1



- Desktop extension in depth - load capacity up to 12 kg
- Plane shelf space, even with tilted desktop
- Fixed by using two brackets on the back of the desk
- Rounded corners
- Aluminium extensions on the desk legs – for extra stability
- Material: melamine-coated particle board
- Can be retrofitted
- Addition: moll Baskets

22 Flex Deck

↔ 120 cm ↕ 30 cm
↕ 68 cm
⊞ 15,5 kg
📦 0,057 m³
🪪 1



23 Flex Deck CP + CPE

↔ 90 cm ↕ 30 cm
↕ 68 cm
⊞ 13,2 kg
📦 0,057 m³
🪪 1



- Multifunctional shelf with two levels and one magnetic board incl. 4 magnets - load capacity up to 12 kg
- Magnetic board can also be used as whiteboard
- Additional shelf space above the desktop
- Rounded shelves
- Two corner brackets made of aluminium on the top shelf (lateral support)
- Fixed by using two brackets on the back of the desk
- Material: melamine-coated particle board
- Can be retrofitted
- Addition: Utensilo behind and moll Baskets

24 Express height adapter

↔ 10 cm
 ⬆ 1,6 kg
 📦 0,01 m³
 🛠 1



- Desk extension by additional 10 cm for a body height of 1.85 meters and taller
- With the height adapter the Champion CPE has an extended adjustment range from 79 to 124 cm (instead of 69-114cm)

Attention: Only suitable for Champion Compact Express

25 Qi-Charger

↔ 8 cm
 ⬆ 8 cm
 ⬆ 0,3 kg
 📦 0,002 m³
 🛠 1



Place it on the indicated position on the desktop and charge your Smartphone

- Invisible integrated into the desktop
- Wireless charging of smartphones & -watches
- Charging position for the device is indicated by a sticker on the desktop
- Can be retrofitted on desks manufactured after 05/2018 - for older models, the desktop must be completely replaced
- See www.moll-funktion.com for compatible devices

27 66 Cubic+ Pad

↔ 43 cm
 ⬆ 54 cm
 ↔ 42 cm
 ⬆ 22,5 kg
 📦 0,132 m³
 🛠 1



- Mobile container with rounded corners - load capacity up to 75 kg
- 4 castors - 2 are equipped with brakes
- Organisational unit with plenty of storage space
- Design matches the Champion family
- Two drawers (DIN A3) - load capacity up to 2.5 kg
- One lockable drawer for equipment with a hidden secret box – can be loaded up to 1 kg
- Automatic self-closing system
- 8 accent color inlays for the drawer handles included
- Material: melamine-coated particle board
- Addition: (Seat-)Pad - turning the Cubic into a stool

28 Cubicmax

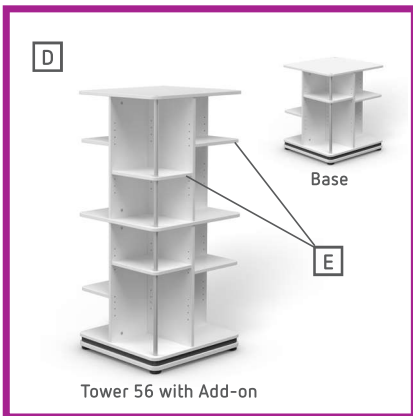
↔ 43 cm
 ⬆ 54 cm
 ↔ 88 cm
 ⬆ 45,5 kg
 📦 0,26 m³
 🛠 1



- Large option to the Cubic mobile container
- Four castors - two are equipped with brakes
- Organisation unit with even more storage space
- Design matches the Champion family
- Three drawers (DIN A3) - load capacity up to 2.5 kg
- One lockable drawer for equipment with a hidden secret box – can be loaded up to 1 kg
- Automatic self-closing system
- Open shelf compartment above the drawers with a flexible shelf
- 8 accent color inlays for the drawer handles included
- Material: melamine-coated particle board
- Addition: moll Baskets

Mobile containers & Tower 56





Features:

mobile container & rotating shelf	Width (cm)	Depth (cm)	Height (cm)	Design
Pro	43	54	43	white, oak, maple-white
Cubic	43	54	42	white
Cubicmax	43	54	88	white
Tower 56	56	56	67-126	white

- A** Mobile container **Pro** with four castors, 3 drawers (2 in DIN A3) with self-closing mechanism, including one lockable drawer with a secret box and 6 color inlays for the drawer handles

The design of the Pro is matching the Winner and Joker. Pro is available in three versions: white, maple-white and oak. In addition, with its (seat-) pad it is the perfect stool.

- B** **Cubic** fits the Champion perfectly: The mobile container has 3 drawers (2 in DIN A3) with self-closing mechanism, one of them is lockable and has a secret box. 8 color inlays for the handles complement the organizer and with a pad it can be converted into a stool.

- C** The **Cubicmax** offers even more storage space with an additional drawer and a shelf compartment that is adjustable in height and depth. The shelf compartment is divided into two parts: If both shelves are positioned in the rear part of the compartment, two divided compartments are created and in the front area you will have enough space for folders.

- D** **Tower 56**: Square rotating shelf with low noise turning system and soft pinch protection. Shelves which can be variably positioned in their height offer flexible storage space. The moll Baskets leave nothing left to be desired when it comes to tidy storage.

Tower 56 modules:

- » Base-module
- » Add-on: additional shelf level with 4 shelves (flexible adjustable)

Additions:

- E** Shelf set for Tower 56
- F** (Seat-) Pad
- G** moll Baskets

Universal Additions

50 Anti-slip stop

↔	45 cm
⌘	6 cm
⌘	1 cm
⊞	0,5 kg
📦	0,008 m ³
🔢	1



- Transparent anti slip stop when desktop is tilted – included as standard equipment of Joker

51 Cable-Butler

↔	10 cm
⌘	5 cm
⌘	8 cm
⊞	0,2 kg



- Helpful tool when working on a computer or notebook
- Can be clipped onto all desktops
- All cables are secured and tidy on the desk
- Cables remain within reach and do not fall down

52 Basic book holder

↔	32 cm
⌘	15 cm
⌘	23 cm
⊞	0,6 kg



- Transparent book holder with timetable holder, template and reading magnifier - included as standard equipment of Joker and Winner
- Brackets allow the book holder to be hooked in even when the desktop is tilted.

53 Design book holder

↔	33 cm
⌘	13 cm
⌘	24 cm
⊞	0,6 kg
📦	0,001 m ³
🔢	1



- Foldable book holder included as standard equipment of Champion
- Two flip-out clamps hold the notebook or booklet
- Brackets allow the book holder to be hooked in even when the desktop is tilted – it's foldable and portable

54 Magnet ruler

↔	45 cm	⌘	6 cm
⌘	1 cm		
⊞	0,5 kg		
📦	0,008 m ³		
🔢	1		



- Transparent anti-slip device with ruler and magnifying glass – included as standard equipment of Winner and Champion
- 2 invisible magnetic inlays keep the anti-slip device at the desktop when the desk is tilted
- Only suitable for Winner and Champion

55 Design ruler

↔	54 cm	⌘	5 cm
⌘	1 cm		
⊞	0,7 kg		
📦	0,008 m ³		
🔢	1		



- High quality aluminium ruler
- 2 invisible magnetic inlays keep the anti-slip device in place when the desktop is tilted
- Can only be used with Winner and Champion

56 Orga-Set

- ↔ 23 cm
- ↔ 17 cm
- ↔ 5 cm
- ⊞ 0,4 kg



- Fits into all moll drawers, mobile containers and into the Tower 56
- Writing and painting accessories are always tidy in the drawer and can be placed on the desk as a complete set
- With flip-out tape dispenser and sharpener

57 Hook for bags

- ↔ 5 cm
- ↔ 3 cm
- ↔ 5 cm
- ⊞ 0,18 kg



- For hanging on the side panels
- Schoolbag always hangs neatly in its place
- Supplied as standard equipment with Champion, Winner and Joker

58 59 Blotting pads

- ↔ 59 cm
- ↔ 42 cm
- ↔ 0,3 cm
- ⊞ 0,8 kg (2,18 kg Set)
- ⊞ 1



- Four different designs: planets, dino, ballerina and world map
- Long-lasting, scratch-resistant, easy to clean surface
- Anti-slip bottom
- The blotting pads also provide useful learning content

63 moll Baskets

- ↔ 20,6 cm
- ↔ 17,8 cm
- ↔ 13,2 cm
- ↔ 28,6 cm
- ↔ 20,6 cm
- ↔ 6,8 cm

Basket 130



Basket 70



- Each set consists of one Basket 130 and one Basket 70
- The felt boxes have practical eyelets
- Office accessories can be neatly stowed away
- Available in four colors: blue, grey, green, pink (inside grey)

64 Utensilo beside

- ↔ 41 cm
- ↔ 2 cm
- ↔ 24 cm
- ⊞ 0,7 kg



- Useful organisational tool
- For hanging on the sides of all moll desks
- With pockets of different sizes
- Available in four colors: blue, grey, green, pink
- Material: durable polyester
- Load capacity up to 2,5 kg

65 Utensilo behind

- ↔ 48 cm
- ↔ 2 cm
- ↔ 23 cm
- ⊞ 1,1 kg

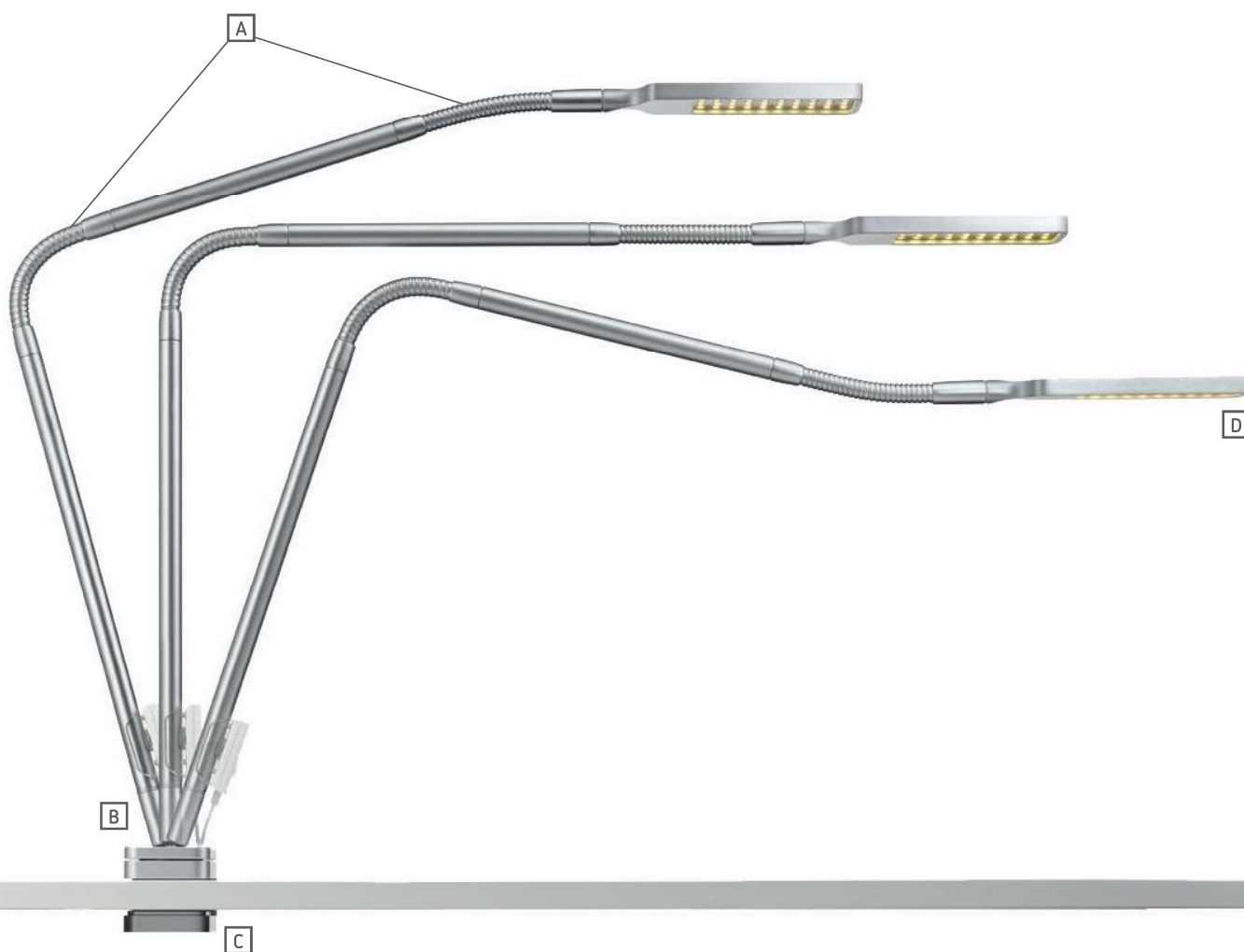


- Useful organisational tool
- Can be used with Flex Deck and Panel
- With pockets of different sizes
- Available in four colors: blue, grey, green, pink
- Material: durable polyester
- Load capacity up to 2,5 kg

Flexlight

72

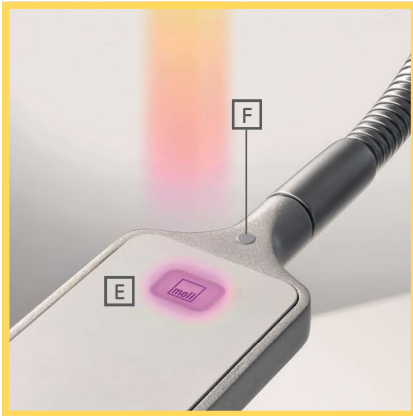
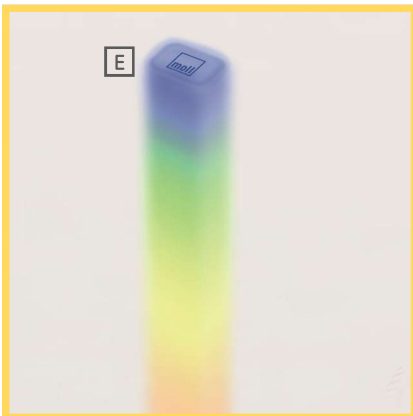
- ↔ 62 cm
- ↕ 42 cm
- ⊞ 2 kg
- 📦 0,01 m³
- 🔧 1



Design: PEARL CREATIVE



2002196/EC-WEEE



Features:

Contemporary designed LED desk light with various additional functions to clip onto the desktop.

- A** The Flexlight has two moveable goosenecks which allow maximum flexibility in the alignment of the desk light.
- B** The integrated ball joint in the base allows the light to be positioned exactly where it is needed.
- C** A clamp which holds the Flexlight securely to the desk - for a thickness of the desktop from 13 to 26 mm. Unique: this even works perfectly when the light is mounted on a tilted desktop.
- D** Luminaire head with 40 LEDs of energy efficiency class: A - A++
 - » 85 % reduction in energy consumption compared to a 60 W light bulb
 - » Nominal luminous flux 690 lumen
 - » Nominal power consumption 10 W
 - » Color temperature 3500 K
 - » Nominal service life 25,000 h (lamp)
- E** Power button with additional night light function, which can change its color at the touch of the button. If required, this function can also be switched off.
- F** Illumination is controlled via a touch button - flicker-free and steplessly dimmable between 100% and 5%.

Built-in:

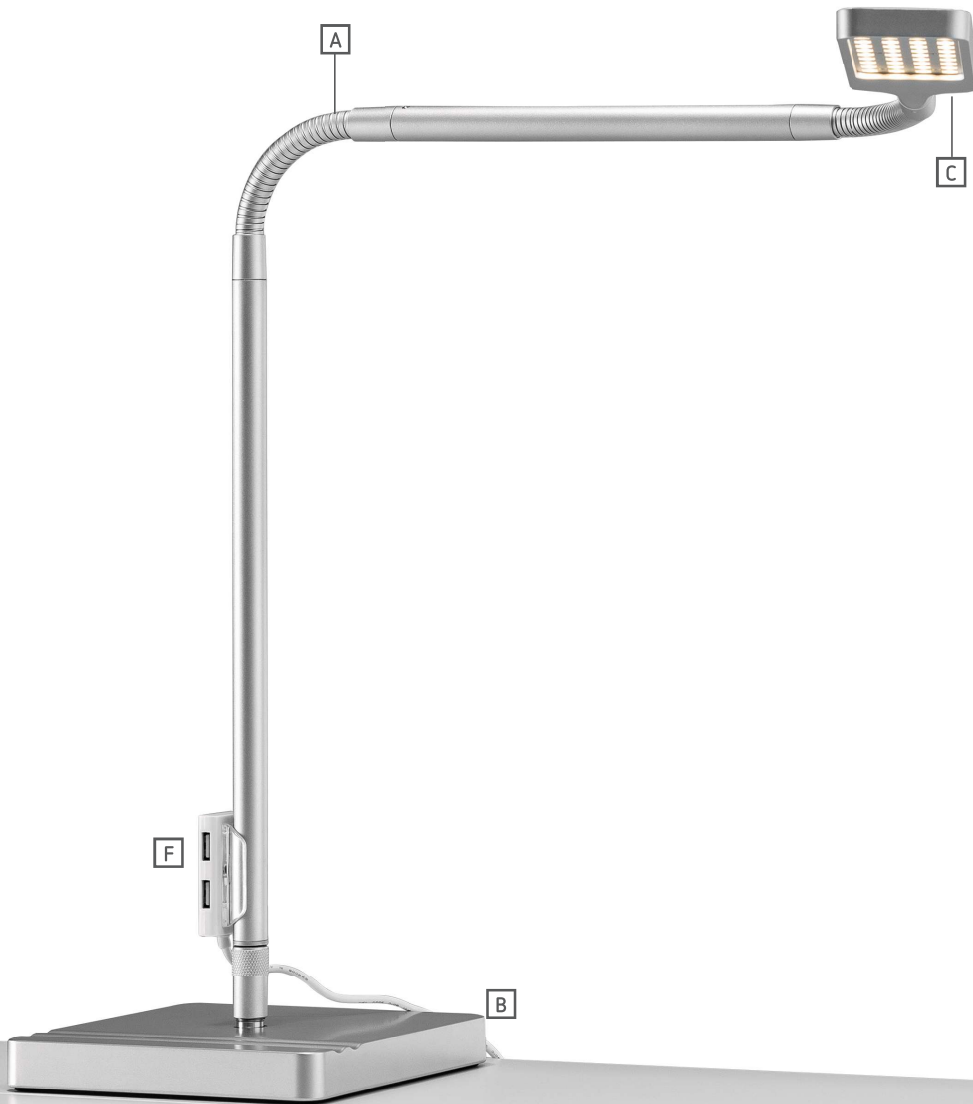
- G** USB charger

	<p>This light contains built-in LED lamps.</p>		<p>LED</p>	
<p>The integrated lamps of the light cannot be replaced.</p>				
	<p>Flexlight 362150</p>	<p>874/2012</p>		

L7

73

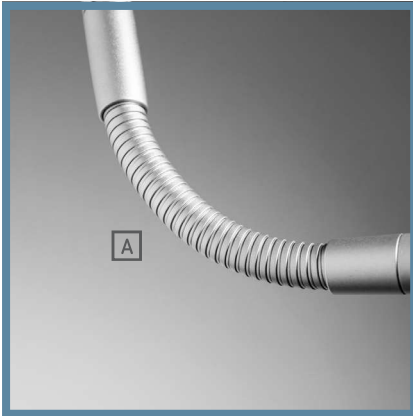
- ↔ 62 cm
- ↕ 42 cm
- ⚖ 4,1 kg
- 📦 0,01 m³
- 🔧 1



www.tuv.com
ID 000056267



2002196/EC-WEEE




Features:

Simplistically designed LED desk light with base and a wide range of additional functions.

- A** Two goosenecks provide the necessary flexibility.
- B** Due to its weight, the light base provides a safe stand for the L7. Two practical pen trays for writing utensils are integrated.
- C** Luminaire head with 40 LEDs of energy efficiency class: A - A++
 - » 85 % reduction in energy consumption compared to a 60 W light bulb
 - » Nominal luminous flux 690 lumen
 - » Nominal power consumption 10 W
 - » Color temperature 3500 K
 - » Nominal service life 25,000 h (lamp)
- D** Power button with additional night light function, which can change its color at the touch of the button. If required, this function can also be switched off.
- E** Illumination is controlled via a touch button – flicker-free and steplessly dimmable between 100% and 5%.


Built-in:

- G** USB charger




This light contains built-in LED lamps.


The integrated lamps of the light cannot be replaced.



LED



moll L7
268860

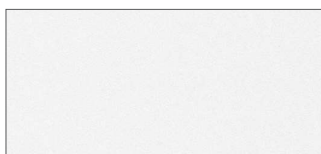


874/2012

Materials

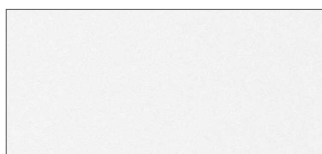
Desktop design

Joker

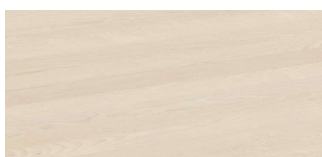


white ¹

Winner



white ¹



maple-white ¹



oak ¹

¹Melamine resin-coated wood-based panel:

moll wood-based panels are approved according to EN 312 and EN 14322. The formaldehyde class CARB II is complied with, which is based on stricter limit values than the E1 test method according to EN 120. In the case of normal, appropriate and intended use no impairments or damages to health are to be expected according to today's state of knowledge.

²MDF wood-based panels coated:

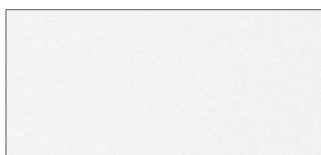
Color pigment and top coat systems: UV-curing water-based coating and therefore particularly environmentally friendly.

³Solid wood panels in oak or walnut both oiled

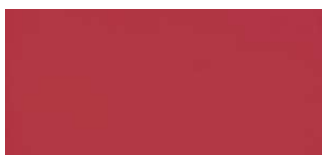
Solid wood as natural raw material from sustainable forestry (FSC certified). Tested according to EN 13353 and EN 13 017-2.

Desktop and side panel design

Champion



white ¹



red ²



lavender ²



green ²



pink ²



blue ²



oak ³



walnut ³

Panel edges:

All panel edges are sealed with high-quality ABS edge tape. ABS is a thermoplastic material with excellent material and usage properties. Impact resistant, mechanically and thermally highly resilient, easy to separate and low-emission disposal.

The promise of moll:



5 year of guaranteed quality

moll guarantees its customers a five-year warranty when they purchase a moll desk or chair. Everything about the warranty conditions can be found at: www.moll-funktion.com



5 years of guarantee availability

moll also offers five years of guaranteed availability only for moll desks - to ensure that additional equipment is available at all times. You can find all guarantee conditions at: www.moll-funktion.com



AGR

moll products are awarded with the AGR seal of quality. Aktion Gesunder Rücken (AGR) independently awards the seal of approval to products that are ergonomic and at the same time healthy for the back according to medical guidelines.



Patents

moll develops all fittings themselves. Many of these innovations are protected by industrial property rights or are patent-registered.



Easy to install

moll attaches the greatest importance to a good organized packing and very good assembly instructions, which are prerequisite for quick and easy assembly.



red dot

moll products have received many awards. Champion was awarded by the international red dot design prize for its design, function and quality.



German Design Award

Winner and Champion desk models have won the international premium prize of the German Design Council in 2018. The Joker was nominated in 2016.



Blue Angel:

moll prime furniture is certified according to RAL UZ 38 and bears the "Blue Angel" seal of approval.



Our responsibility

At moll we use exclusively environmentally friendly materials when manufacturing our desks and chairs. On one hand, we want to keep the CO2 footprint of our products as small as possible. On the other hand, it is very important to us to use materials that can be recycled and reused.



FSC certification

All wood-based materials used by moll are guaranteeing a responsible handling of the raw material wood. All decorative surfaces are tested for abrasion resistance, stain resistance, scratch resistance, impact resistance and cigarette burns in accordance with EN 14322.



CARB II

Wood-based materials used by moll are CARB II compliant with stricter limit values than E1 according to test method EN 120. This ensures that in the case of normal, appropriate and intended use no impairments or damages to health are to be expected according to today's state of knowledge.



PEFC

To ensure the protection of our forests, we purchase our wood only from suppliers with the PEFC seal. This guarantees an ecological and socially acceptable sustainable forestry.



Electrical Equipment Law

moll products are registered according to the Electrical and Electronic Equipment Regulations. Wholesalers and specialist shops are obliged to take back waste electrical and electronic equipment at no charge when purchasing a new equivalent device.



Made in Germany

moll products are engineered and manufactured in Germany according to high quality and safety standards.